

FLORIDA **A&M** UNIVERSITY
AND BRISTOL MYERS SQUIBB

PHARMACEUTICAL INDUSTRY
RESIDENCY PROGRAM
2023 - 2024

TABLE OF CONTENTS

Dear Prospective Residents	3
About Florida A&M University.	3
About Bristol Myers Squibb.	4
Steering Committee Leadership	4
First-Year Clinical Residency.	5
Second-Year Pharmaceutical Industry Residency.	5
Current Residents	6
Recent Alumni Testimonies	6
Past Residents	7
Application Process	8

RESIDENCY SITES AND AREAS OF FOCUS



**Florida A&M University College of
Pharmacy & Pharmaceutical
Sciences, Institute of Public Health**
South Florida Pharmacy Practice Center
10650 State Road 84 Suite #200 Davie, FL 33324



Bristol Myers Squibb
3401 Princeton Pike Lawrence
Township, NJ 08648

RESIDENCY PROGRAM OVERVIEW



JOHNNIE L. EARLY II, PhD, RPh,
Fellow NPhA

**Dean & Professor, Florida A&M
University College of Pharmacy
and Pharmaceutical Sciences,
Institute of Public Health**

This pharmaceutical industry residency program was founded in 2009 as a partnership between Florida A&M University and Bristol Myers Squibb. The vision of the residency is to attract and develop a diverse group of talented pharmacists who bring clinical expertise, innovative ideas, and dedication to improving patient outcomes.

The program provides a two-year residency in the therapeutic area of oncology in the first year and either immunology or oncology in the second year. This residency will provide the residents with a unique experience that bridges the gap between clinical practice and the pharmaceutical industry.

"I am elated that Florida A&M University College of Pharmacy and Pharmaceutical Sciences, Institute of Public Health (FAMU CoPPS, IPH) has maintained a fruitful partnership with Bristol Myers Squibb (BMS), a global big pharma residency training program, which significantly enhances the skills of practitioners, while improving patients' health and attracting residents who help train PharmD learners. The goal of the program is to provide the resident with a substantial experience in the pharmaceutical industry and to emphasize the importance of clinical practice, teaching, and research.

The partnership with BMS aligns with the vision of the College, which is to provide excellent pharmaceutical education, research and service activities statewide, nationally, and globally in a dynamic healthcare environment.

It is my hope that learners consider this unique training program in clinical and pharmaceutical industry settings."

FLORIDA A&M UNIVERSITY

The Florida A&M University College of Pharmacy and Pharmaceutical Sciences, Institute of Public Health program offers PharmD, M.S., and PhD degrees to its learners. With its main campus in Tallahassee, Florida, it is the first pharmacy program in the United States that has a fully accredited Institute of Public Health both on-site and is managed by the College of Pharmacy. The College has additional pharmacy practice centers in Northeast Florida, South Florida, and Central Florida, which support the infrastructure for the College's statewide commitment to pharmacy education and public service.

The evolution of the College has witnessed the initiation of pharmacy education with just one learner in the beginning to now being one of the largest colleges of pharmacy in the country. Currently, the College has more than 1,000 learners and faculty. FAMU CoPPS, IPH has a rich history of producing high-caliber graduates capable of providing exceptional pharmaceutical care. Our unique program focuses on academic excellence, research superiority, and community service; this allows us to prepare learners for leading roles in the practice of pharmacy, research, and public health.

The College reinforces its primary mission through an active role and responsibility in the delivery, outcome, and study of pharmaceutical care services it shares with other healthcare providers. The College is committed to the advancement of pharmaceutical knowledge through teaching, research, and service in a supportive and caring environment that enhances the attainment of educational excellence and the highest standards in professional and ethical practice.

Bristol Myers Squibb is a global biopharmaceutical company firmly focused on its mission to discover, develop and deliver innovative medicines that help patients prevail over serious diseases. We concentrate our research efforts in the following core therapeutic areas: Oncology, Hematology, Immunology, Cardiovascular, Fibrotic Diseases and Neuroscience.

At Bristol Myers Squibb, our biopharmaceutical strategy uniquely combines the reach and resources of a major pharmaceutical company with the entrepreneurial spirit and agility of a successful biotechnology company.

Innovation is at the heart of everything we do. Innovation sparks the groundbreaking science of our laboratories, the state-of-the-art processes in our manufacturing plants, and our pioneering approach to product commercialization.

We are committed to the highest standards of ethics and integrity and promoting economic, social, and environmental sustainability. At Bristol Myers Squibb, we are passionate about science, passionate about innovation, and passionate about making a difference in the lives of patients.



STEERING COMMITTEE LEADERSHIP

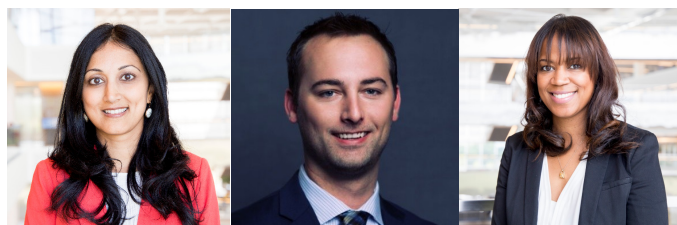
Executive Sponsors



Samantha Gothelf

Melissa Harris

Executive Steering Committee Members



Priya Darouian

Thomas Lehman

Carol Davis-Shiloh

"Bristol Myers Squibb is a company committed to patients and offers tremendous opportunities for pharmacists with an interest in joining the pharmaceutical industry. Both of us entered Bristol Myers Squibb through the Rutgers University PharmD Fellowship program, thus have first hand experience on the impact that preceptors, mentors, and the pharmacist community have on our incoming fellows and residents. Now as managers and sponsors of the program, we are proud to foster an environment where members of our PharmD program are provided opportunities to gain experience and new skills that will prepare them for future opportunities to succeed in the pharmaceutical industry."

As leaders at Bristol Myers Squibb, we know the importance of investing in and engaging talent to fulfill our company's mission for patients. The Florida A&M University PharmD Residency is an important part of our talent strategy and key to cultivating the Bristol Myers Squibb culture and its future."

Samantha Gothelf, PharmD and Melissa Harris, PharmD

FIRST-YEAR CLINICAL RESIDENCY



**NATHANIEL
ERAIKHUEMEN, PharmD**

**First-Year Residency Director, Division
Director and Associate Professor,
Florida A&M University College of
Pharmacy and Pharmaceutical
Sciences, Institute of Public Health
South Florida Pharmacy Practice Center**

In the first year, residents will participate in clinical pharmacology and pharmacy practice with emphasis in hematology, oncology, and transplant medicine at practice sites located in South Florida and Florida A&M University College of Pharmacy and Pharmaceutical Sciences, Institute of Public Health. The resident will actively provide pharmaceutical care to oncology patients in a variety of areas which include: internal medicine, primary care, ambulatory care, critical care, managed care, transplant, nutrition support, infectious disease, and geriatrics. While at the College, the residents will also participate in workshops, meetings, and other engagements to promote professional growth.

The resident will also be given the opportunity to participate in the pharmacy and therapeutics committee, perform medication utilization evaluations, and provide continuing education to healthcare practitioners. As an academic requirement, the resident will participate in teaching and preceptorship activities with FAMU learners enrolled in the college. Residents have the opportunity to:

- Provide pharmaceutical care and patient education within inpatient and outpatient settings
- Deliver lectures to student pharmacists, pharmacists, nurses, and medical residents
- Collaborate with preceptors to educate pharmacy students
- Conduct research with the opportunity to present findings at various conferences
- Interact with healthcare providers to optimize treatment regimens

SECOND-YEAR PHARMACEUTICAL INDUSTRY RESIDENCY

In the second year, the PharmD residents will transition to central New Jersey where they will gain a diverse set of leadership skills and unique cross-functional experiences to launch a successful career in the pharmaceutical industry. Each resident will be positioned on a highly functioning team within the Medical Affairs organization where they can provide significant contributions to the development, launch, and lifecycle management of various assets within BMS portfolio. Our residents will lead critical initiatives and collaborate with a variety of US and global BMS colleagues, key opinion leaders, healthcare professionals, and other cross-functional thought leaders. As a continuum from the first-year experience, the residents will be involved in providing their clinical skills to develop skills to better meet the needs of our customers and improve patient care.

The PharmD residents will gain the following skills and knowledge in these key areas:

- Understand the roles and responsibilities of a PharmD in the Medical Affairs organization
- Engage with cross-functional teams including field medical, home office medical, worldwide publications & scientific content, and commercial stakeholders
- Collaborate with authors/agencies to develop medical publications to inform clinical practice
- Lead the development and execution of comprehensive publication plans (e.g. abstracts, congress posters, oral presentations, manuscripts, review articles) to ensure BMS scientific data is communicated effectively to healthcare professionals around the world
- Engage closely with field medical colleagues to provide trainings and translate insights from the field to guide the BMS medical strategy

CURRENT RESIDENTS



ALYSSA MORGAN,
PharmD, BCOP

**WW Oncology Publications -
Early Transition Assets Resident**
Lawrence Township, NJ
(2nd Year)



NABIL SUKAR,
PharmD

**US Medical Strategy -
Immunology Resident**
Lawrence Township, NJ
(2nd Year)



IMANI CARPENTER,
PharmD

Oncology Clinical Resident
Davie, FL
(1st Year)



AVERY EDWARDS,
PharmD

Oncology Clinical Resident
Davie, FL
(1st Year)

RECENT ALUMNI TESTIMONIES



FRANCO DICKSON, PharmD

Sr. Manager, WW Oncology Publications, Bristol Myers Squibb
WW Oncology Publications - Early Transition Assets Resident, 2020-2022

"It's an honor to call myself an alumnus of the Florida A&M University/Bristol Myers Squibb PharmD Residency Program. The clinical experiences gave me an in-depth understanding of oncology, a unique skill set that has set me apart in my career thus far. My experience on the publication team during my 2nd year equipped me with the knowledge and expertise required to excel not only as a publication lead but also as a professional within the pharmaceutical industry. The transferable skills obtained through clinical, teaching, research, and industry experiences have molded me into a well-rounded professional. Developing a culture that fosters mentorship has taught me the importance of paying it forward to the upcoming generation. I will forever be indebted to the FAMU/BMS program for being integral to my growth as a professional and, most importantly, a person."



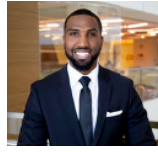
RAENA RHONE GRACE, PharmD

Medical Science Liaison - Neurology, Bristol Myers Squibb
US Medical Strategy - Immunology Resident, 2020-2022

"The FAMU/BMS Pharmaceutical Industry Residency has been foundational to my personal and professional development. Personally, I have gained confidence in my ability to bring value to multidisciplinary teams, the profession of pharmacy, and ultimately to patients. Professionally, I have deepened my clinical knowledge and strengthened my business acumen. With the guidance and support of my preceptors and mentors gained through the residency program, I have become a more effective leader, scientific communicator, and strategic collaborator - all critical skills needed for lasting success as a medical affairs professional. Furthermore, I have been afforded the opportunity to contribute to the professional development of over one hundred students by helping to lead our APPE program and serving as an adjunct professor at FAMU."



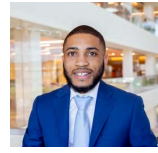
RICHIE ONWUCHEKWA UBA, PharmD
Clinical Scientist, Cell Therapy, BMS
 WW Immuno-Oncology Publications & Scientific Content Resident, 2019-2021



AARON NORTH, PharmD
Medical Science Liaison, Gastroenterology/Immunology, BMS
 US Immunoscience Medical Strategy Resident, 2019-2021



IMANI PELT, PharmD
Assoc. Director, WW Oncology Publications, Astellas
 WW Oncology Medical Publications Resident, 2018-2020



DONALLE JOHNSON, PharmD
Assoc. Director, US Field Medical Content Excellence & Project Management, Eisai
 Oncology Medical Strategy Resident, 2018-2020



BRYANDT DOUGLAS, PharmD
Hematology Medical Science Liaison, BMS
 WW Oncology Medical Publications Resident, 2017-2019



VICTORIA SPENCE, PharmD
Sr. Medical Science Liaison, Thoracic Oncology, AstraZeneca
 US Oncology Medical Strategy Resident, 2017-2019



JESSIE NIA HWANG, PharmD
Assoc. Director, US Medical Affairs Immunology, BMS
 WW Oncology Medical Publications Resident, 2017-2018



KEVIN CLARKE, PharmD
Assoc. Director, Global Scientific Communications Strategy, Vertex Pharmaceuticals
 WW Oncology Medical Publications Resident, 2016-2018



MARISSA WEST, PharmD
Director, US Medical Oncology, Patient Access & Quality of Care, Gilead Sciences
 WW Oncology Medical Publications, 2015-2017



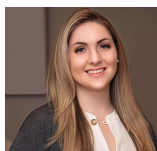
SHANADA MONESTIME, PharmD, BCOP
Director, Community Engaged Research, GO2 Foundation for Lung Cancer
 WW Oncology Medical Information Resident, 2015-2017



TEMEITOPE OSIYEMI, PharmD
Medical Science Director, Genentech
 Medical Information Resident, 2014-2015



JADE HOANG, PharmD
Assoc. Director, Professional Marketing - US Dermatology/Immunology, BMS
 R&D Strategy and Analytics Resident, 2014-2015



KARINA UTKINA, PharmD
Medical Director, Heme/Onc, Pharmacosmos Therapeutics
 R&D Strategy and Analytics Resident, 2013-2014



IJEOMA NWOSU OYETUNDE, PharmD
Director, WW Medical Affairs Oncology - Product Design & Delivery, BMS
 Medical Information Resident, 2013-2014



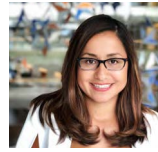
DAWN BEY, PharmD
Sr. Director, Evidence and Value Development (Field HEOR), Taiho Oncology
 R&D Strategy and Analytics Resident, 2012-2013



KIITAN BABALOLA, PharmD
Regional Medical Scientific Director, Oncology, Merck
 Medical Information Resident, 2012-2013



CHRISTINA WRIGHT, PharmD
National Director, Immunology Field Medical, Sobi Pharmaceuticals
 Medical Information Resident, 2011-2012



LINA SINGLETON, PharmD
Director, Strategy & Operations, US Oncology Medical, Novartis
 Medical Information Resident, 2009-2010



APPLICATION PROCESS:

APPLICATION MATERIALS DUE WEDNESDAY, OCTOBER 12, 2022

QUALIFICATIONS:

- **Required:** Doctor of Pharmacy (PharmD) degree from an accredited institution prior to the start of the residency
- Selected candidates must be licensed as a pharmacist prior to or within 90 days of starting the first year of the clinical residency
- This program does not currently sponsor candidates for H-1B status to work as pharmacy residents

SUBMISSION:

- Click [here](#) to submit application material
- For questions please contact FAMU@bms.com

APPLICATION MATERIALS:

- Letter of Intent
- Curriculum vitae
- Unofficial Transcript
- Three letters of recommendation (submit by Friday, Nov. 11)

PROCESS:

- Selected candidates will be contacted for an onsite interview
- One candidate will be selected for each position
- All candidates will be notified of their status by the end of December 2022