



MEET OUR FELLOWS

Meet the 19 NFC fellows who are doing their fellowships in collaboration with IPhO!

IPhO Fellows are active leaders in the IPhO National Fellows Council, a group of fellows from across the country who come together to develop networking opportunities, professional development resources, and career advancement support to enhance their fellowship experience.

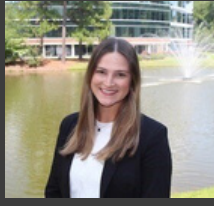
UCB

Taysir Chamem



Global Clinical Sciences and Operations 24-26
Alma Mater: University of North Carolina

Izzabella Christian



Global Regulatory Affairs 24-26
Alma Mater: University of Mississippi

Alyssa DeAngelo



Medical Affairs - Immunology 25-27
Alma Mater: Mercer University

Megan Gidron



Global Clinical Sciences and Operations 25-27
Alma Mater: Campbell University

Jenny Kong



Global Regulatory Affairs 25-27
Alma Mater: University of North Carolina

Shelby Matthews



Medical Affairs - Immunology 24-26
Alma Mater: Lake Erie College of Osteopathic Medicine

Joelle Odigie



Global Medical Affairs 24-26
Alma Mater: University of Maryland Eastern Shore

Cailyn Persinger



Global Clinical Sciences and Operations 25-27
Alma Mater: University of Illinois Chicago

Zehra Razai



Medical Safety and Pharmacovigilance 25-27
Alma Mater: University of North Carolina

Maria Reji



Medical Safety and Pharmacovigilance 24-26
Alma Mater: Midwestern University

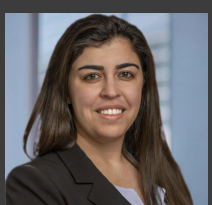
Brooke Stephen



Medical Affairs - Immunology 25-27
Alma Mater: Mercer University

Clinical Education Alliance

Leen Alyaseen



Healthcare Education and Outcomes Research 24-26
Alma Mater: Texas A&M University

Manav Patel



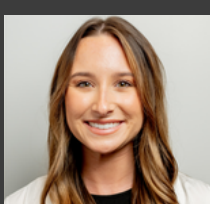
Healthcare Education and Outcomes Research 25-27
Alma Mater: University of Georgia

Chellam Sundaram



Healthcare Education and Outcomes Research 25-27
Alma Mater: Rutgers University

Carley Yawn



Healthcare Education and Outcomes Research 24-26
Alma Mater: University of Georgia

Wellspect

Ava Jakab



Market Access/Health Policy 25-27
Alma Mater: Northeast Ohio Medical University

Novocure

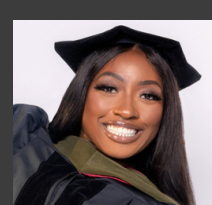
Yuxi Lei



Global Commercial Marketing 25-26
Alma Mater: Rutgers University

Becton Dickinson

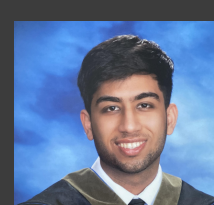
Ifreke King



Marketing 24-26
Alma Mater: Philadelphia College of Osteopathic Medicine, GA

Woven Health Collective

Tanmaya Phanda



Medical Communications 25-26
Alma Mater: Rutgers University